

AECOM

PROJECT
NET ZERO TEESIDE PROJECT

Net Zero Teesside

APPLICANTS
NZT POWER LTD. AND NZNS STORAGE LTD.

KEY

- Site Boundary
- Power, Capture and Compressor Site

Zone of Influence

- Air Quality - Construction - 350m from proposed Site Boundary and 500m from site entrances
- Vibration - Construction - 50m from proposed Site Boundary
- Geology and Hydrogeology - 500m from proposed Site Boundary
- Hydrology and Water Resources - 1km from proposed Site Boundary
- Aquatic Ecology, Terrestrial Ecology and Ornithology and Nature Conservation - 2km from proposed Site Boundary

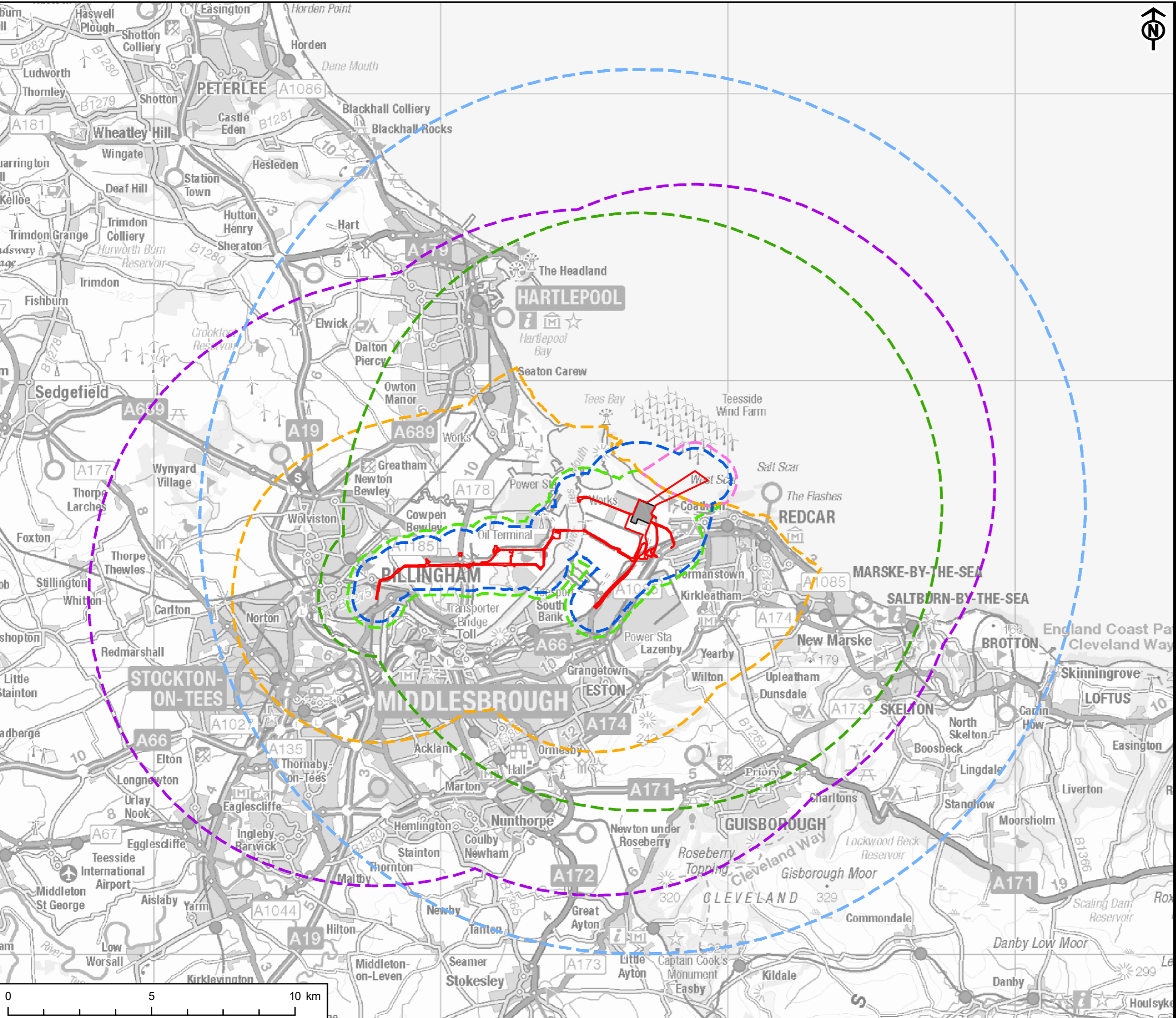
TITLE
FIGURE 24-1
ZONES OF INFLUENCE FOR CUMULATIVE EFFECTS ASSESSMENT

REFERENCE
NZT_221028_ES_24-1_v9

SHEET NUMBER
1 of 3

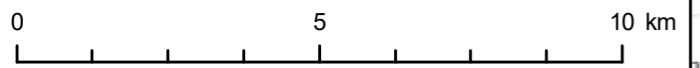
DATE
28/10/2022

This drawing has been produced for the use of AECOM's client. It may not be used, modified or relied upon by third parties, except as agreed by AECOM or as required by law. AECOM accepts no responsibility, and denies any liability whatsoever, to any party that uses or relies upon this drawing without AECOM's express written consent. All dimensions are indicative and in metres unless otherwise noted. Do not scale this document.

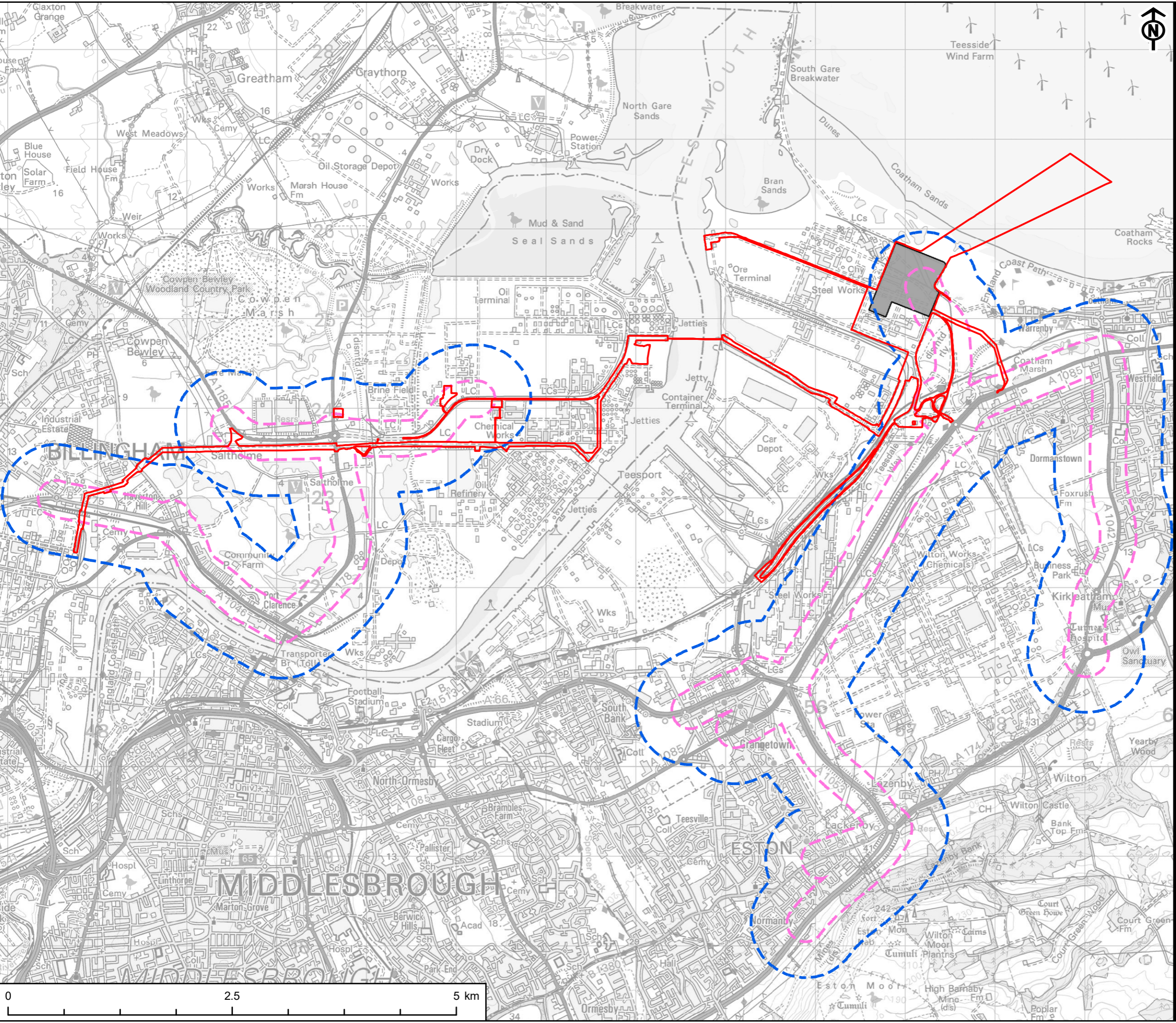


KEY

- Site Boundary
- Power, Capture and Compressor Site
- Zone of Influence**
- Noise – Construction and Operation - Combined Study Area. See Table 24-1, ES Chapter 24, for further detail
- Marine Heritage - 1km from proposed Site Boundary (Offshore only)
- Archaeology and Cultural Heritage - Non-Designated Assets - 1km from proposed Site Boundary (Onshore only)
- Archaeology and Cultural Heritage - Designated Assets - 5km from proposed Site Boundary (Onshore only)
- Marine Ecology and Nature Conservation - 10km from proposed Site Boundary
- Landscape and Visual Amenity - 10km from proposed PCC Site and 2km from proposed Site Boundary where that extends beyond 10km from the PCC Site
- Air Quality (Operation), Marine Ecology (Air Quality Effects), and Terrestrial Ecology, Aquatic Ecology and Ornithology and Nature Conservation (International and National Nature Conservation Designations) - 15km from proposed PCC Site



This drawing has been produced for the use of AECOM's client. It may not be used, modified or relied upon by third parties, except as agreed by AECOM or as required by law. AECOM accepts no responsibility, and denies any liability whatsoever, to any party that uses or relies upon this drawing without AECOM's express written consent. All dimensions are indicative and in metres unless otherwise noted. Do not scale this document.



AECOM

PROJECT
NET ZERO TEESIDE PROJECT

APPLICANTS
NZN POWER LTD. AND NZNS STORAGE LTD.

KEY

- Site Boundary
- Power, Capture and Compressor Site
- Zone of Influence
 - Air Quality - Traffic Air Quality - 200m from affected roads
 - Noise and Vibration - Traffic Noise - 600m from affected roads

TITLE
FIGURE 24-1
ZONES OF INFLUENCE FOR CUMULATIVE EFFECTS ASSESSMENT

REFERENCE
NZN_221028_ES_24-1_v9

SHEET NUMBER
3 of 3

DATE
28/10/2022

This drawing has been produced for the use of AECOM's client. It may not be used, modified or relied upon by third parties, except as agreed by AECOM or as required by law. AECOM accepts no responsibility, and denies any liability whatsoever, to any party that uses or relies upon this drawing without AECOM's express written consent. All dimensions are indicative and in metres unless otherwise noted. Do not scale this document.